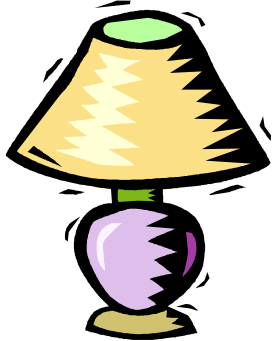
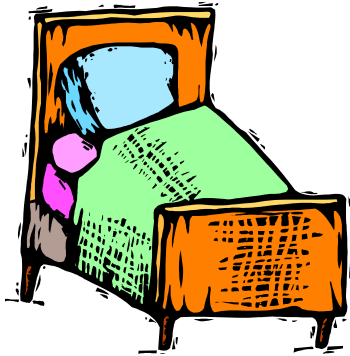
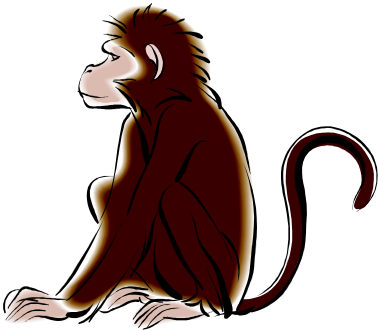
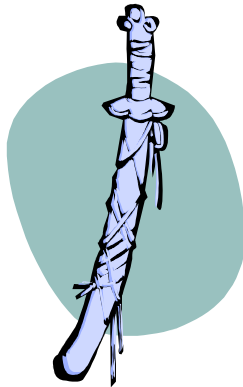
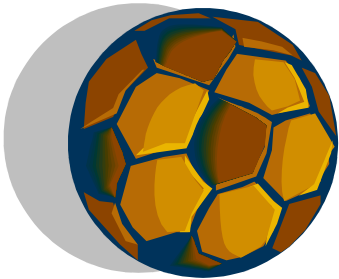


ELA – ALBOR. EXÁMEN LOGOPÉDICO DE ARTICULACIÓN

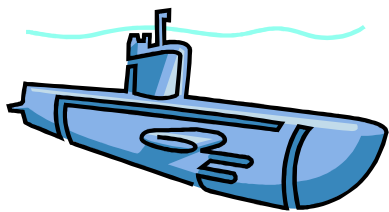
M



P



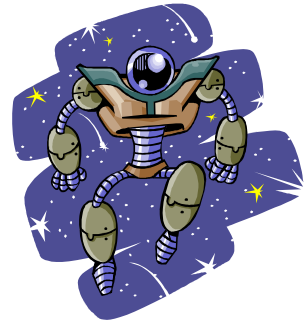
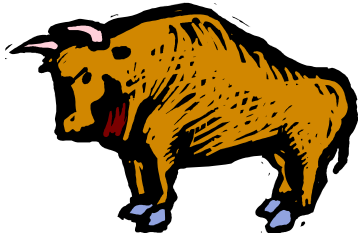
B



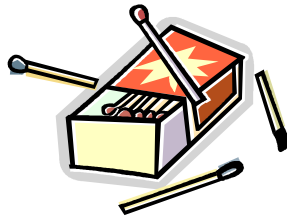
D



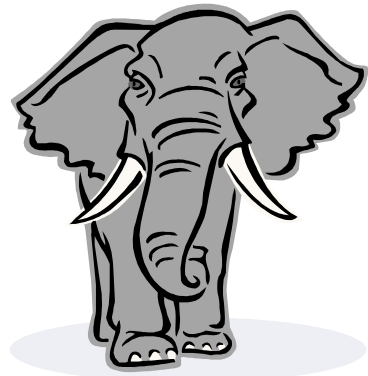
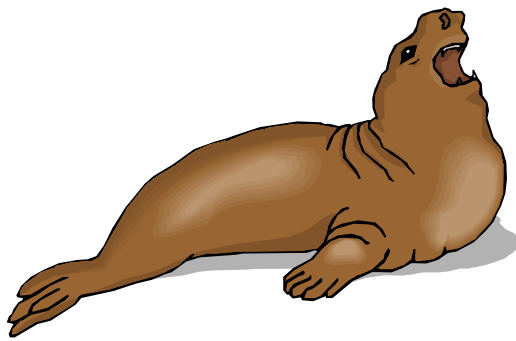
T



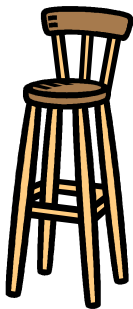
Z



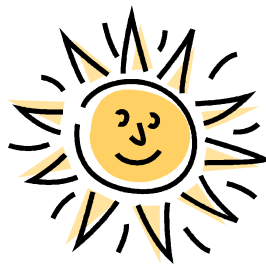
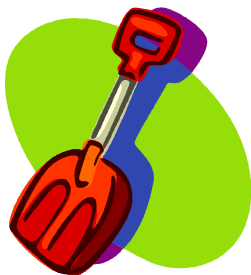
F



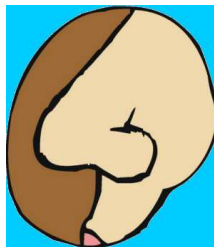
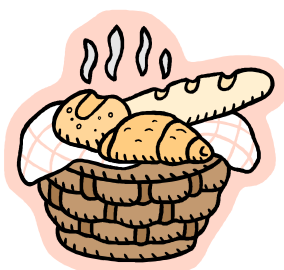
S



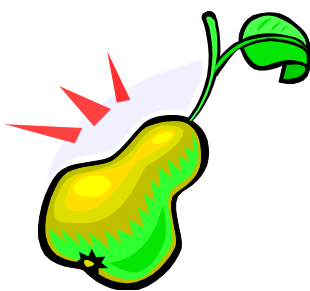
L



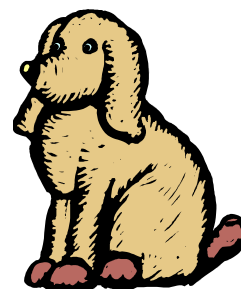
N



R



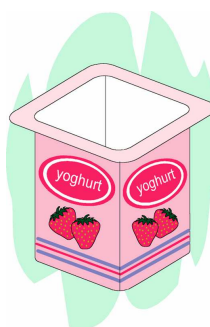
RR



CH



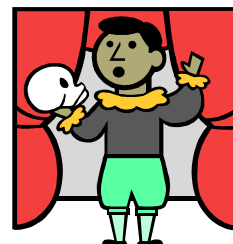
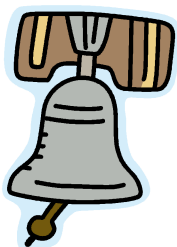
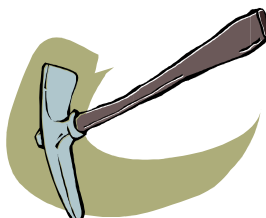
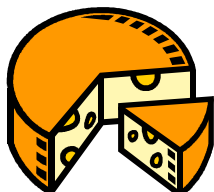
LL



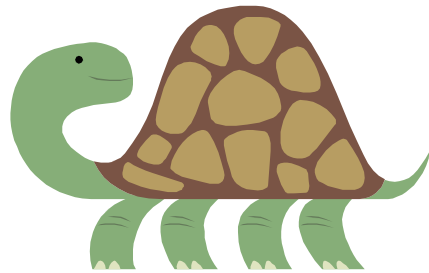
Ñ



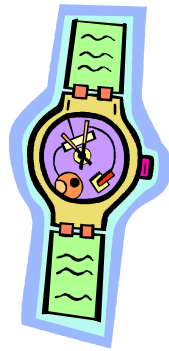
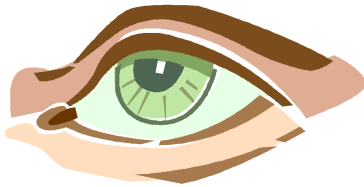
K



G



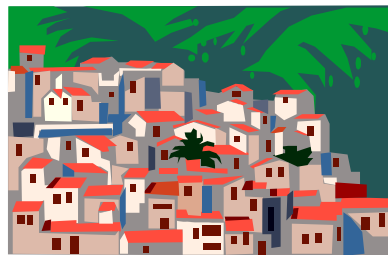
J



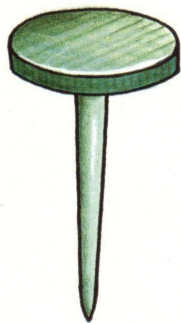
X



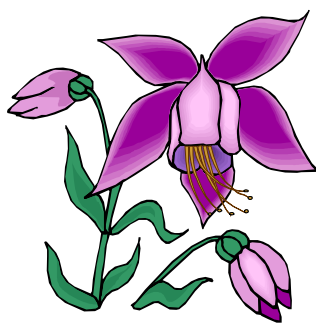
BL



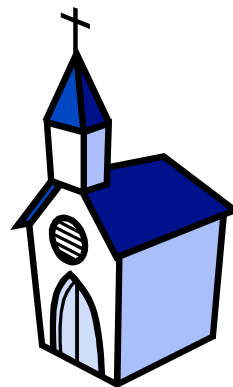
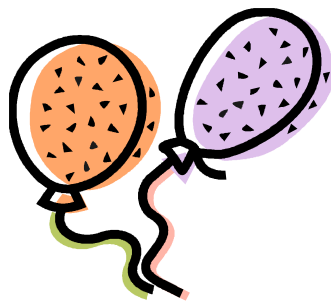
CL



FL



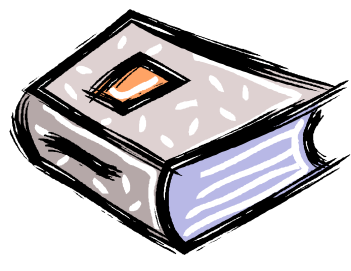
GL



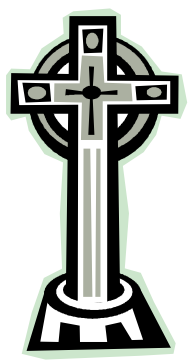
PL



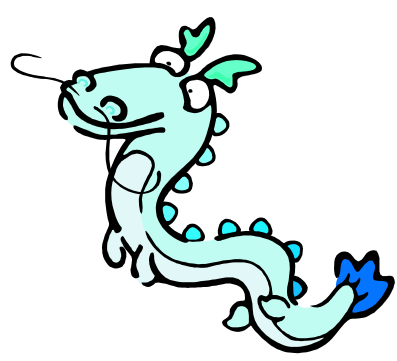
BR



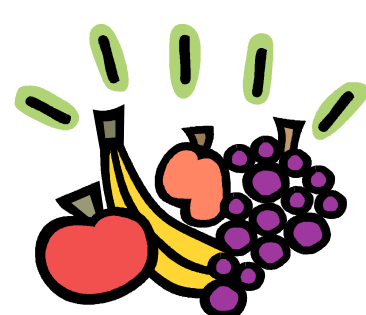
CR



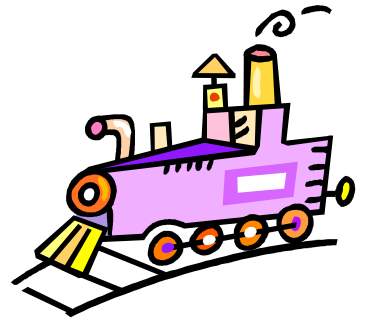
DR



FR



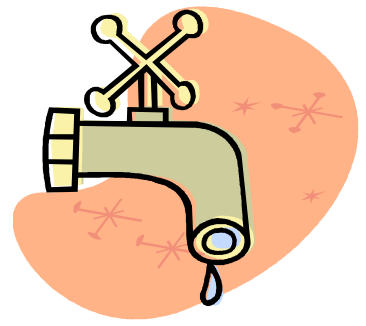
TR



PR



GR



AE



AI





EA



IA



OA



UA



IE



UE



IO



UO



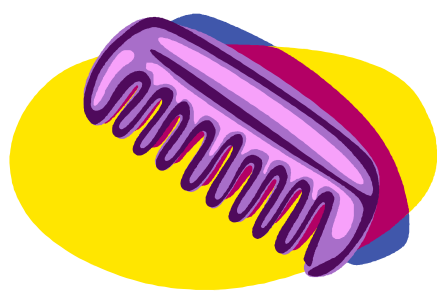
AO



AU



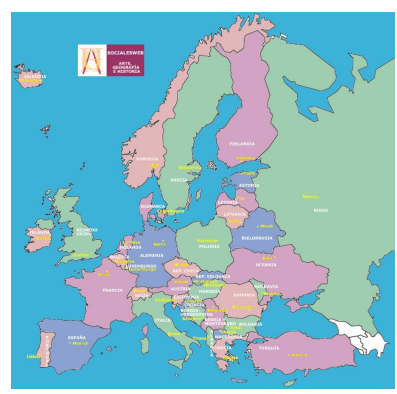
EI



EO



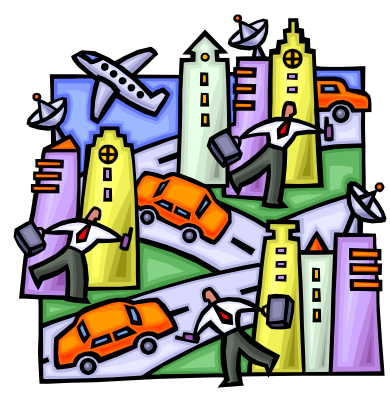
EU



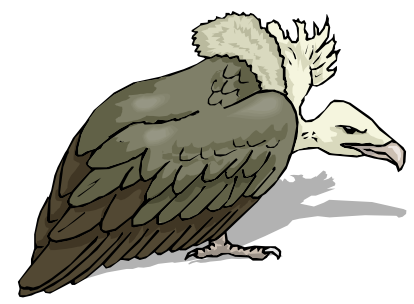
OI



IU



UI



# EXÁMEN LOGOPÉDICO DE LA ARTICULACIÓN

## ELA-ALBOR

		HISTORIA Nº:
NOMBRE Y APELLIDOS:		
EDAD:	FECHA:	
VALORACIÓN: • SU= SUSTITUCIÓN      • AS= ASIMILACIÓN      • SI= SIMPLIFICACIÓN		
MODO DE EJECUCIÓN: • ( ) REPETICIÓN DEL SONIDO • ( ) IDENTIFICACIÓN DEL OBJETO • ( ) LECTURA DE LA PALABRA		

# EXÁMEN LOGOPEDICO DE LA ARTICULACIÓN. ELA-ALBOR

	FONEMAS	LISTA DE PALABRAS			INICIAL	MEDIA	FINAL
BILABIALES	/m/	MONO	CAMA	LAMPARA			
	/p/	PELOTA	ESPADA	STOP			
	/b-v/	BOLO VACA	CUBO UVAS	SUBMARINO			
DENTALES	/d/	DADO	NIDO	RED			
	/t/	TORO	BOTA	ROBOT			
	/z/	ZAPATO CERILLAS	LAZO	PEZ			
LABIODENTALES	/f/	FOCA	ELEFANTE				
ALVEOLARES	/s/	SILLA	MESA	VELAS CESTA			
	/l/	LUNA	PALA	SOL BOLSO			
	/n/	NARIZ	MANO	PAN MONTAÑA			
	/r/		PERA	TENEDOR ARBOL			
	/rr/	RUEDA	RATÓN	PERRO			

	FONEMAS	LISTA DE PALABRAS			INICIAL	MEDIA	FINAL
PALATALES	/ch/	CHUPETE	CUCHARA				
	/ll/	LLAVE YOGUR	GALLETA PAYASO				
	/ñ/	ÑU	ÑÑA				
VELARES	/k/	CAMPANA QUESO	PICO CARACOL	ACTOR			
	/g/	GATO	TORTUGA				
	/j/	JIRAFÁ	OJO	RELOJ			
	/x/	XILOFONO	TAXI				

FONEMAS	SINFONES "L"		INICIAL	MEDIA - FINAL
/bl/	BLUSA	PUEBLO		
/cl/	CLAVO	ANCLA		
/fl/	FLOR	INFLA		
/gl/	GLOBO	IGLESIA		
/pl/	PLUMA	SOPLA		

FONEMAS	SINFONES "R"		INICIAL	MEDIA - FINAL
/br/	BRAZO	LIBRO		
/cr/	CRUZ	MICROFONO		
/dr/	DRAGON	LADRILLO		
/fr/	FRUTA	COFRE		
/tr/	TREN	LETRAS		
/pr/	PRESO	COMPRA		
/gr/	GRIFO	TIGRE		

GRUPO VOCALICO	PALABRAS	TIPO ERROR
/ae/	PAELLA	
/ai/	MAIZ	
/ao/	COLA-CAO	
/au/	JAULA	
/ei/	PEINE	
/eo/	LEON	
/eu/	EUROPA	
/oi/	OIDO	
/iu/	CIUDAD	

GRUPO VOCALICO	PALABRAS	TIPO ERROR
/ui/	BUITRE	
/ea/	CHIMENEA	
/ia/	LLUVIA	
/oa/	TOALLA	
/ua/	CUATRO	
/ie/	PIE	
/ue/	PUENTE	
/io/	INDIO	
/uo/	BUHO	